

## Installation and Setup of CME TRACKER™

- ▶ **To install the program (Single User Version or Multi-User Server CD)**  
The Server install for a Multi-User version is performed from a workstation. There are no programs run on the server and it acts as a data repository only.

You must have full administrative privileges to install. You must have Long Filename Support. User must have read and write privileges to the CME Tracker folder and to: c:\ program files\ borland and c:\ program files\ corel and all subdirectories. User must also have privileges to c:\ My Documents folder which is created during the instation process

Be sure that all other programs are closed.

Insert CD in your CD ROM Drive

After a minute or so, the CD will AutoRun, bringing up the Installation.

If your CD does not support the AutoRun function,

Go to Start...Run and Browse the CD

Click to open SETUP32.EXE

Follow instructions on your screen.

**When prompted for the Destination Directory, you will type in the NETWORK DRIVE/ PATH where the program/data files will reside. Or, accept the LOCAL DRIVE/PATH for single user version.**

**When prompted for the Shared Directory, ALWAYS accept the default.**

Upon completion, reboot the system and proceed to "Configure BDE".

To install WORKSTATION CD (for multi-user versions):

Insert CD in your CD ROM Drive

After a minute or so, the CD will AutoRun, bringing up the Installation.



**When prompted for the Destination Directory, you will type in the NETWORK DRIVE/ PATH where the program/data files reside.**

**When prompted for the Shared Directory, ALWAYS accept the default.**

ALL Workstations must point to the same network DRIVE/PATH where program files reside

- ▶ **To Configure BDE (Borland® Database Engine)**

After installation, to set up a network directory for each workstation and to set system parameters: (Multi-user and Single User Versions)

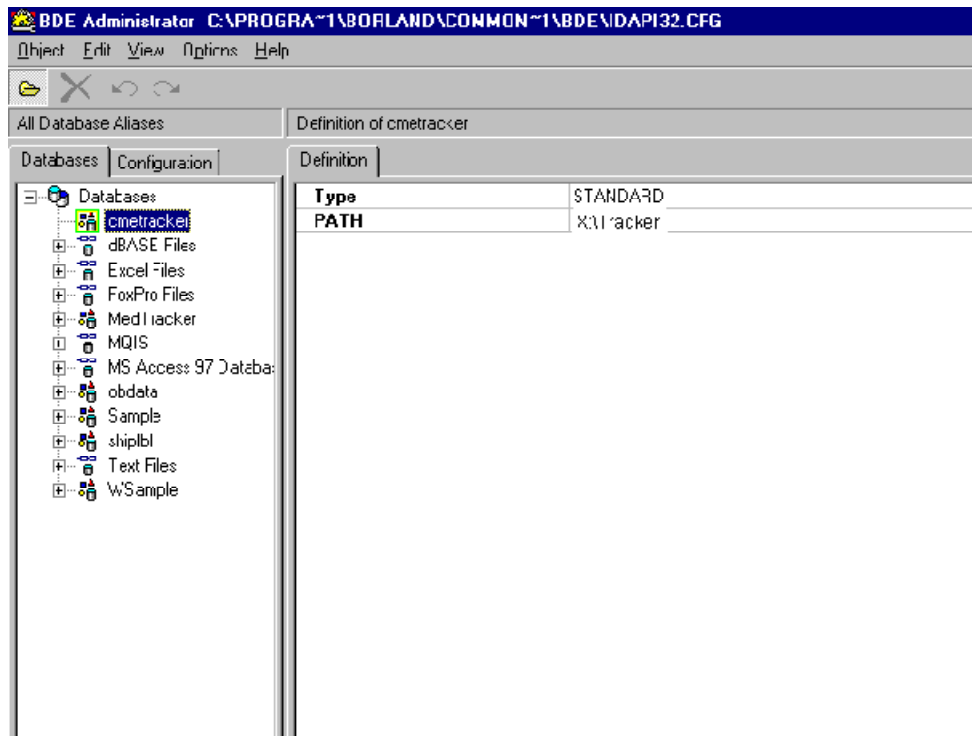
Go to Settings...Control Panel...BDE Administrator



BDE  
Administrator

## Installation and Setup of CME TRACKER™

### ► Configure BDE (continued)



Expand the “Databases” Tab, click on CMETRACKER™



\*\*\* Note that an "Alias" for CMETRACKER is automatically inserted upon the first execution of the CME Tracker program you do not have to make any changes in this area upon initial install.

If you prefer, or if you have any problems executing the program, you can insert the item manually as follows:

Right-Click, in databases column.

Select New

Click OK for Standard Database Driver

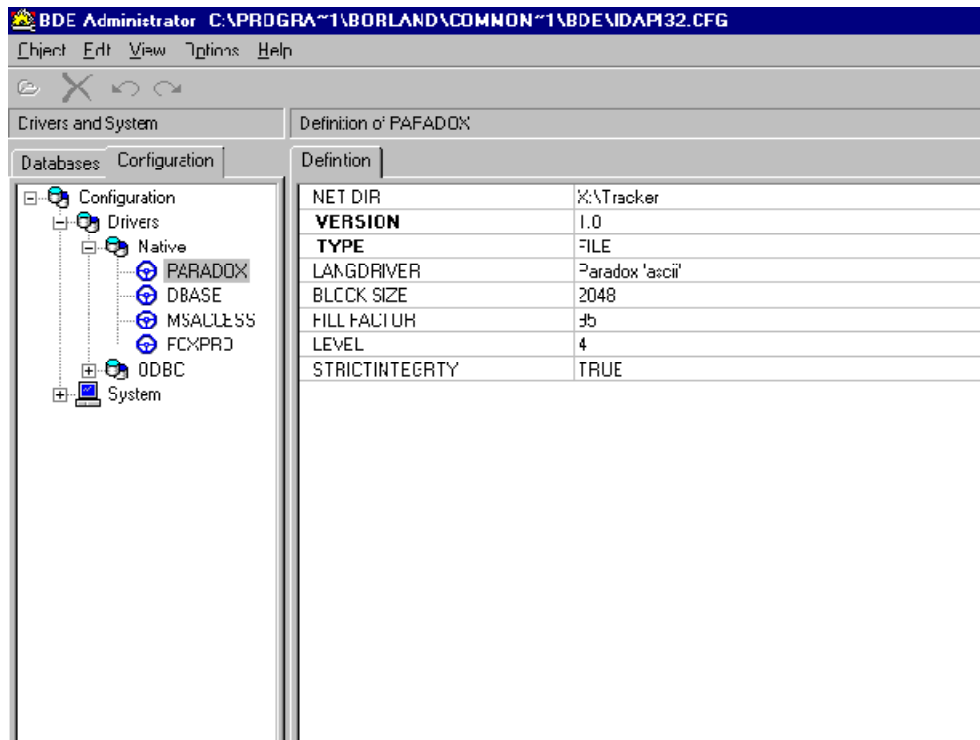
A new database will be created on the left.

Type in the name CMETRACKER

Type in the install drive/ path where your CME Tracker™ program/ data are located.

## Installation and Setup of CME TRACKER™

### ► Configure BDE (continued)



Expand the Configuration Tab...Drivers...Native...Paradox

Type in the NET DIR path. (Same as CME Tracker™ install Path)

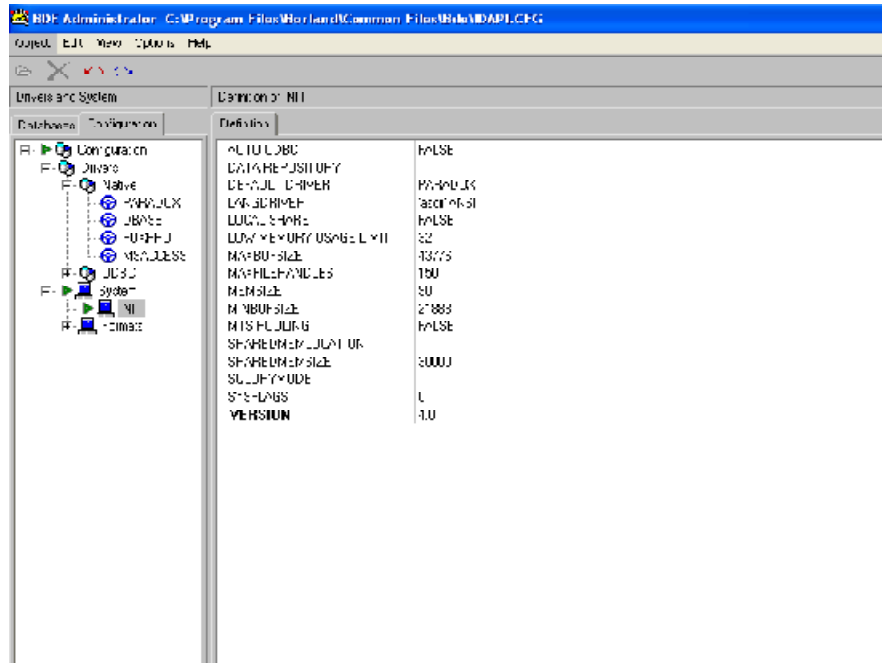
This directory simply points to the desired location to build the 'pdoxusr.net', which is a file created dynamically when you run CME Tracker.



The file manages network access for all users, therefore, all users should point to the same location.

## Installation and Setup of CME TRACKER™

### ► Configure BDE (continued)



#### In the "System" Icon

These settings are all "performance" related. The following are the only items you will want to change to increase performance:

#### Local Share - TRUE

#### MinBufsize should be 1/3 of Total RAM

for computers with **64 MB RAM**- type in **21888**

for computers with **128 MB RAM**-type in **43776**

#### MaxBufsize should be 2/3 of Total RAM

for computers with **64 MB RAM**-type in **43776**

for computers with **128 MB RAM**-type in **65664**

#### MaxFile Handles

could be adjusted upward, but

it should not be necessary. If you need to change them, change to 100

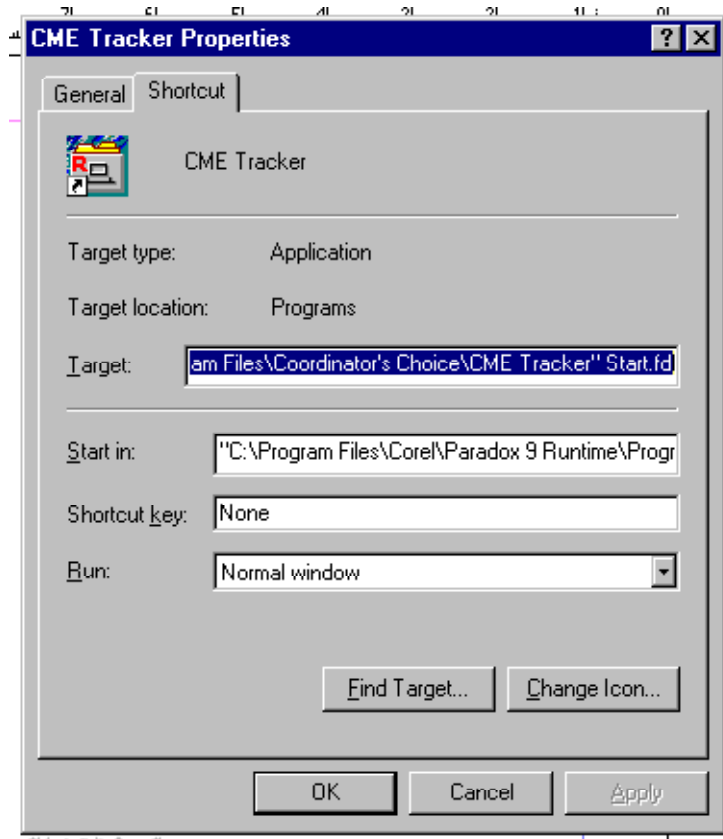
Object...Exit...Save Changes

## Installation and Setup of CME TRACKER™

### ► Configure BDE (continued)



#### CME Tracker Icon Properties



The Target should launch the executable "pdxrwn32.exe", with parameters for your working directory and the CME Tracker "Start.fdl" as follows:

```
"C:\ Program Files\ Core\ Paradox 9
Runtime\ Programs\ PDXRWN32.exe" -q -w "C:\ Program
Files\ Coordinator's Choice\ CME Tracker" Start.fdl
```

Start In path should be the drive/ directory where Paradox 9 Runtime is installed.

```
"C:\ Program Files\ Core\ Paradox 9 Runtime\ Programs"
```

## Installation and Setup of CME TRACKER™

### ► Troubleshooting

In the event that you move the CME Tracker™ program files to a new directory, or if you get execute errors upon opening:

Check to see that your icon shortcut is pointing to the proper directory in "Target" and "Start In"

Find and Delete Pdoxusr.net on the network and Local Drive  
This file will be created dynamically each time you attempt to load CME Tracker

Find and Delete \*.lck on the network and Local Drive  
Lock files may be created if a user was in the program when moved

Review your BDE Settings using the instructions for configuring BDE  
The "Net Dir" and Alias are paramount to the program execution

Reinstalling the entire program is seldom necessary. Check the above before attempting a reinstall. **Be sure to back up the existing directory before attempting a reinstall.**

### **CAUTION**

if you are uninstalling the software after data has been added, be sure you have a current backup.

you will have the opportunity to indicate whether to uninstall PARADOX RUNTIME or the CME TRACKER.

**If you choose to uninstall the CME Tracker, you will be uninstalling all DATA FILES that reside on the server and the workstation software on the local machine**

### **PRINTING**

If user has any trouble printing from the CME Tracker:

1. execute pfred.exe in c:\program files\corell\paradox 9 runtime\programs directory. Register printers.
2. Rename any printers with "long" printer names (exceed 25) that have punctuation.  
or
3. Capture printer port for any "long" network printer names.

# Installation and Setup of CME TRACKER™

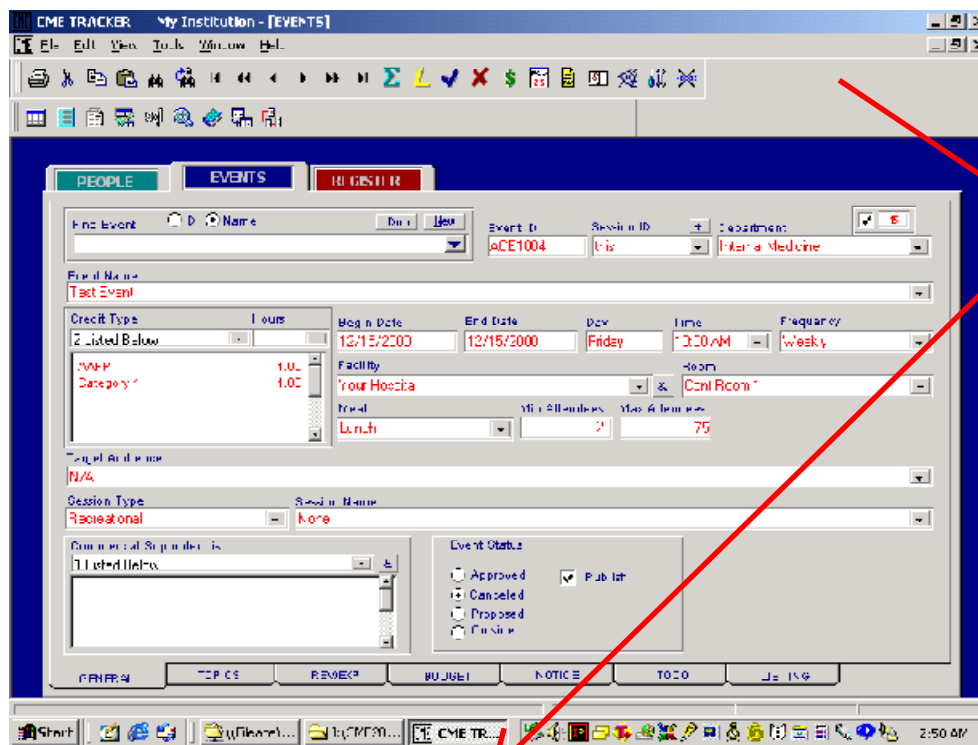
## ▶ Program Setup



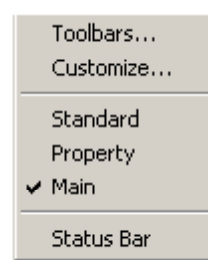
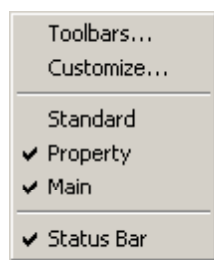
### Screen Display

CME Tracker is intended to be displayed in a screen area of 800 x 600 pixels

If your CME Tracker display contains too many toolbars like this:



Right click on the Toolbar to see which toolbars are being displayed.



Click to UNCHECK "Properties" and "Status Bar" for proper screen configuration. The "Main" toolbar should remain.

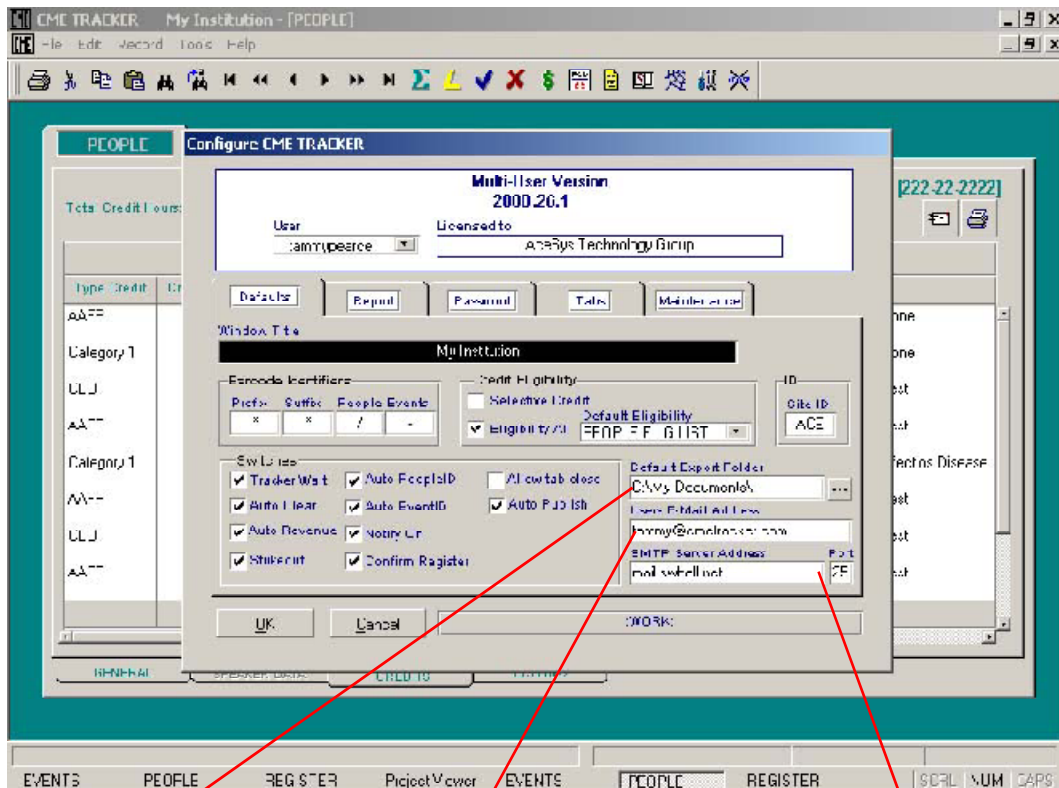
# Installation and Setup of CME TRACKER™

## ▶ Program Configuration



### Email Reports

To email reports, credit summaries, or notices to registrants, the email information should be configured in this screen.



Create a default folder to export to

Enter your email address

Enter your mail server and port number (SMTP server to send mail)

To activate the email feature, this information MUST be configured.



## Installation and Setup of CME TRACKER™

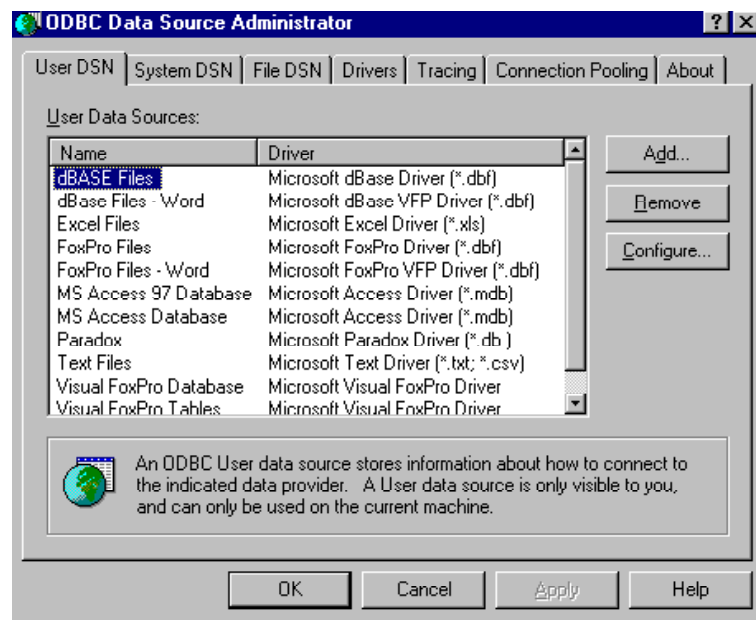
### ▶ Program Setup



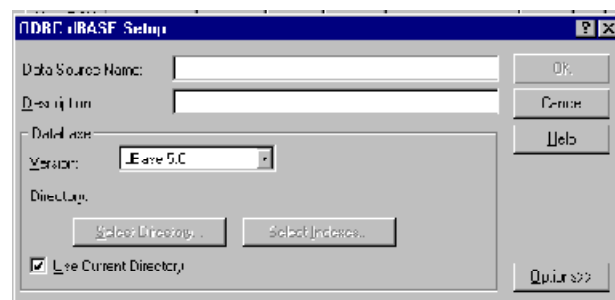
#### ODBC Drivers for Custom Reports

CME Tracker custom reports use Microsoft Word merge files. The data file for the merge is a Dbase (.dbf) file. If you have any problem running custom reports, or if the user does not have the data conversion files loaded for Dbase:

Go to Start...Settings...Control Panel...ODBC Data Sources



Click ADD, Select Microsoft Dbase driver and click FINISH



Database Filename should be DBASE FILES, DESCRIPTION should be DBASE FILES...Click OK.

This should give user access to Dbase merge data in Microsoft Word.

# Installation and Setup of CME TRACKER™

## ▶ Program Setup

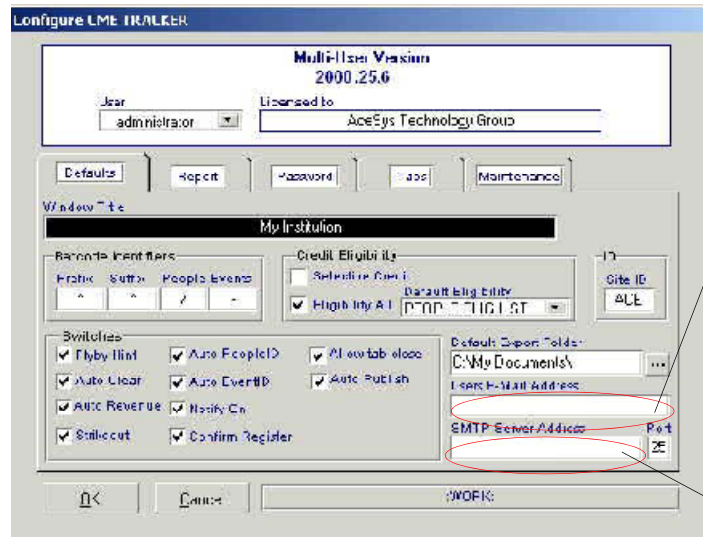


### Setup for Email Reporting

CME Tracker email reports use the Win2pdf printer to print the report to an Acrobat Reader file. Then, the reports are sent out via your standard SMTP Server.

The following steps are necessary for email reporting to function properly.

1. Install the Win2pdf printer with the executable "wpdf110.exe" on your installation CD.  
**(Win2pdf printer is for Windows NT and Windows 2000 only)**
2. Install Acrobat Reader if it is not already on the system.
3. Type your Email address and SMTP Server in the Tools...Configure, Defaults Tab



Type in User's email address here

Type in SMTP Server Address here

4. Start CME Tracker and click on Printer in the upper left-hand corner  
This will initialize the new "Win2PDF" printer.

Once you've initialized the printer, you can use the Email printing feature.