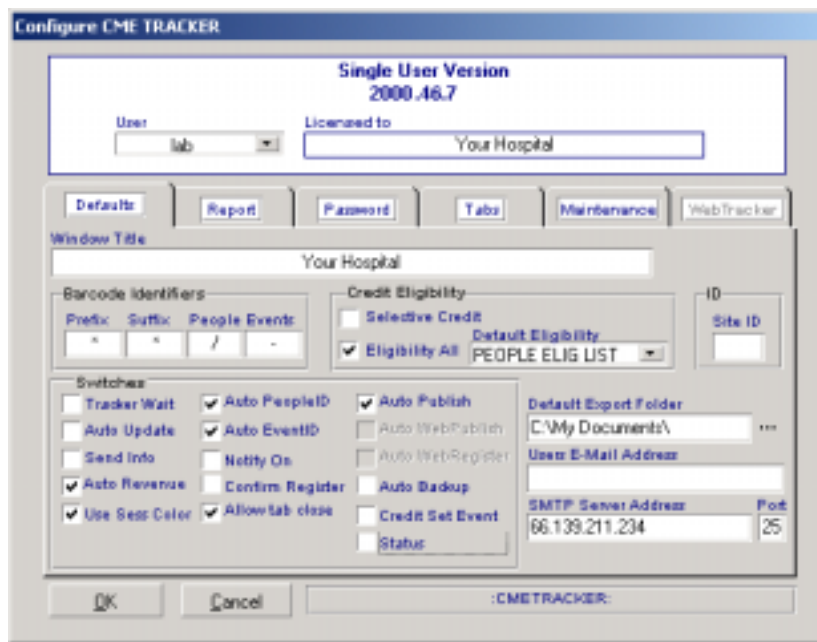


## Key to Configuration of “Switches”



**Tracker Wait**-When turned on gives you an animated hourglass

**Auto Update**-When turned on allows automatic updates for the program, However will not work with some firewalls (default off)

**Send Info**-When turned on sends CME Tracker information about the program, However will not work with some firewalls (default off)

**Auto Revenue**-When turned on allows all revenue entered through registration to automatically post to revenue tab (default on)

**Use Sess Color**-When turned on sessions will be green and main events black (default on)

**Auto PeopleID**-When turned on, program automatically assigns numeric id (default on)

**Auto EventID**-When turned on, program automatically assigns numeric id (default on)

**Notify On**-When turned on, notification of “ToDo” items pops up upon opening program (default off)

**Confirm Register**-When turned on, each time you register a person a confirmation dialog pops up (default off)

**Allow Tab Close**-Used by Support for troubleshooting (default off)

**Auto Publish**-When turned on, the Publish checkbox will be checked on each event as created. (default on) --Publish means that event will appear on calendar

**Auto WebPublish**-When turned on, the WebPublish box will be checked on each event Created (default disabled, if you have a Web Tracker-default on)—WebPublish means that event will appear on Web calendar

**Auto WebRegister**-When turned on, the WebRegister box will be checked on each event created (default disabled, if you have a Web Tracker-default on)—WebRegister means that event allows web registration

**Auto Backup**-When turned on, program will prompt for backup when closing. Must fill in the backup location in Maintenance Tab. (default off)

**Credit Set Event**-When turned on, program will change the active event selected in the People...Credit area automatically. (default off)

**Status**-When turned on, program will have status bar (default off)