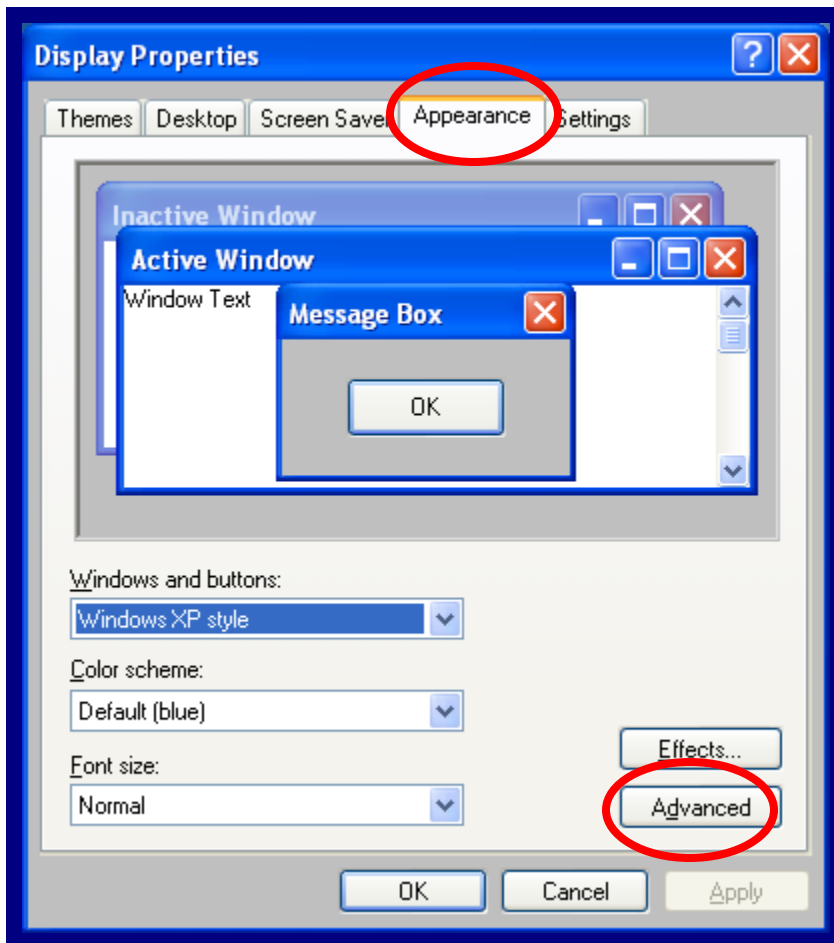


Objective: Changing the color of CME TRACKER for intended display.

Step 1: Right click on your desktop background. Click on Properties. Click on the Appearance tab. Click on Advanced. ([Fig. A](#))



[Fig. A](#)

Step 2: If you click on the item dropdown list, you change the item you highlight. Click on 3D Objects. Click on Color. The ideal color is the Gray as highlighted. (Fig. B) Do this for Menu also. Then click on OK.

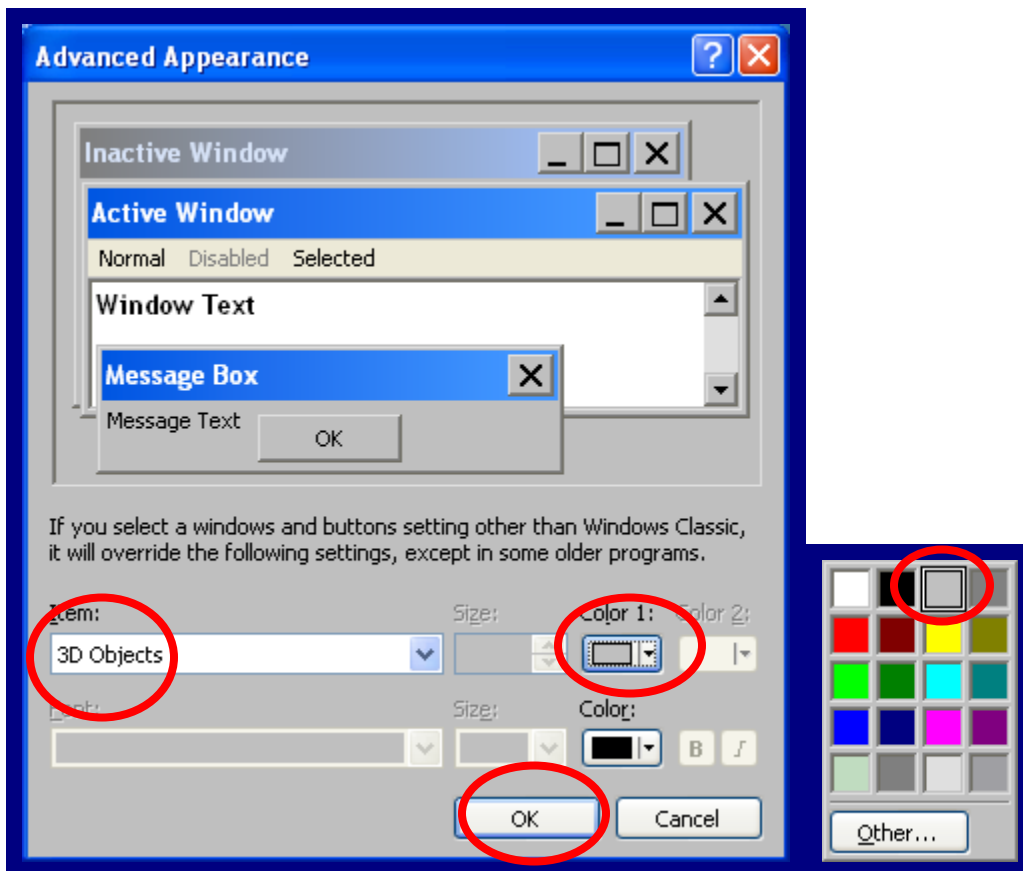


Fig. B