

**Objective:** Removing Locks in order to open CME Tracker when an error condition exists.

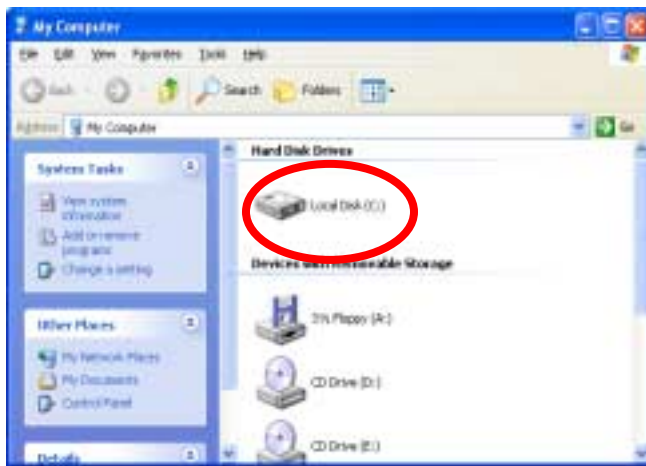
**Note:** Knowing your CME Tracker Folder Path will help you to Remove Locks. See Tutorial: "Locating your CME Tracker Folder Path".

When opening CME Tracker, you may have the following Error box pop up. (Fig. A) Removing locks will eliminate this.



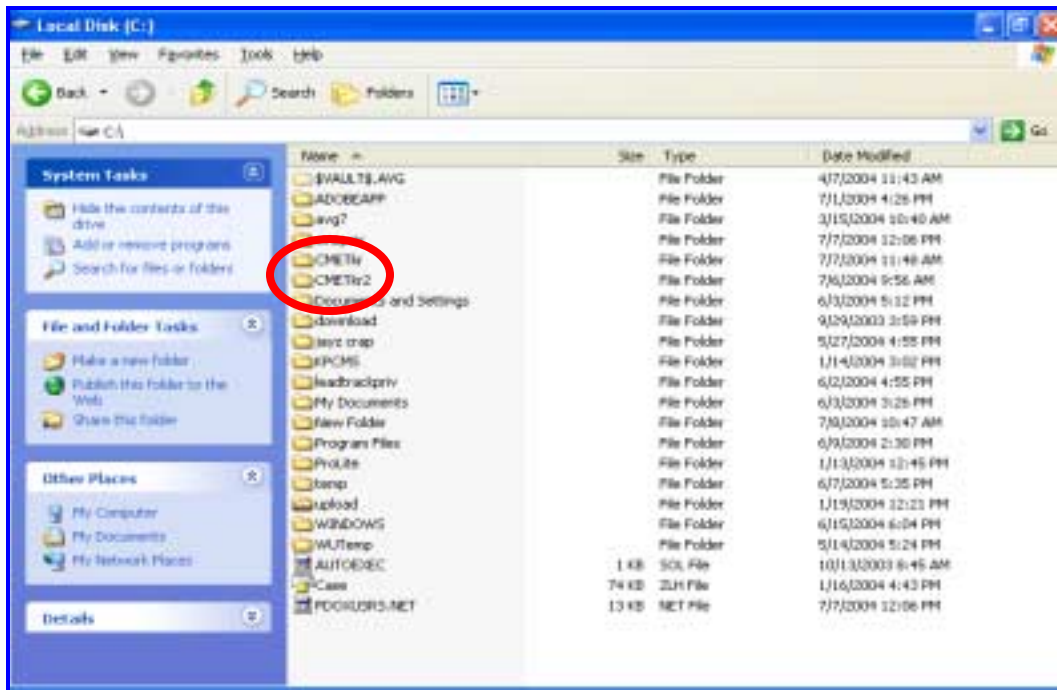
(Fig. A)

**Step 1:** Click the start button on your Taskbar. Click on My Computer. Click twice on the Drive for your CME Tracker . (FIG B)



(Fig. B)

Step 2: Click twice to open the CME Tracker Folder. (Fig. C)



(Fig. C)

**Step 3:** Click on View and Click on Details from the pull down to alphabetize the file list. Browse to Remlock32. Click twice on Remlok32 to open. (Fig. D)

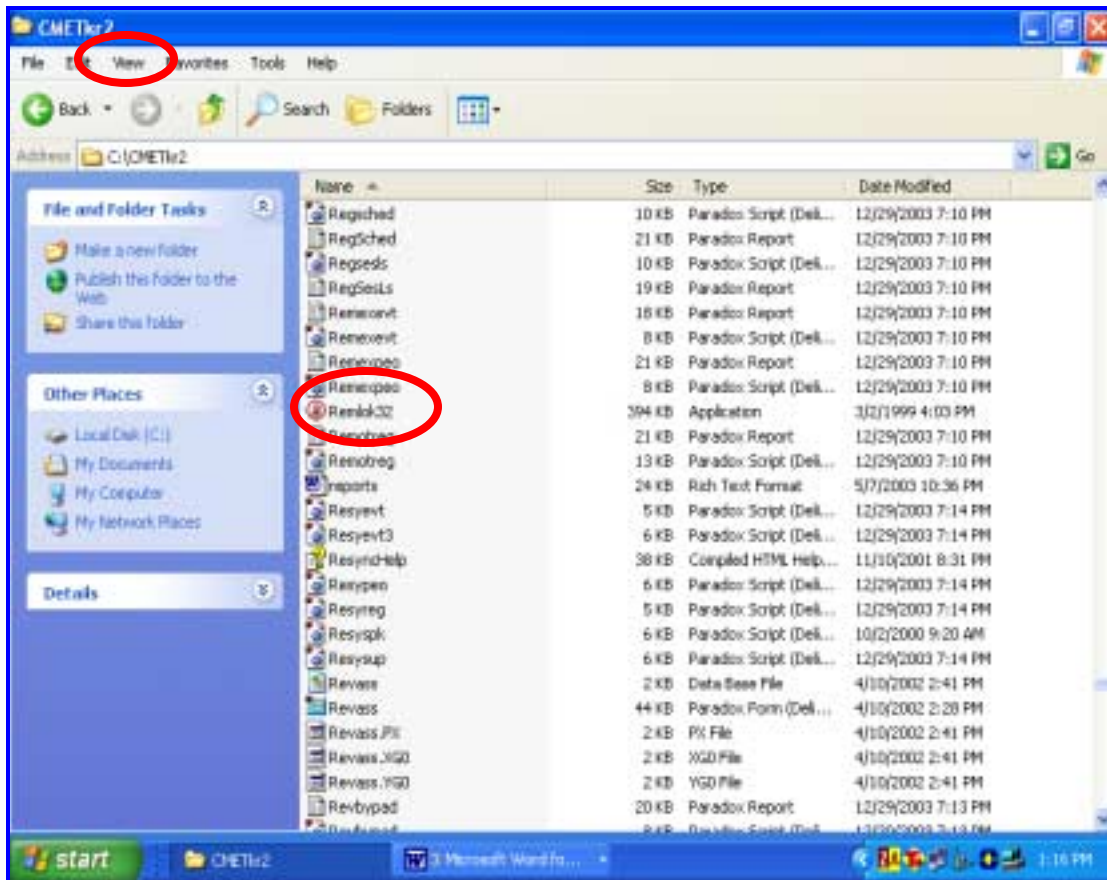
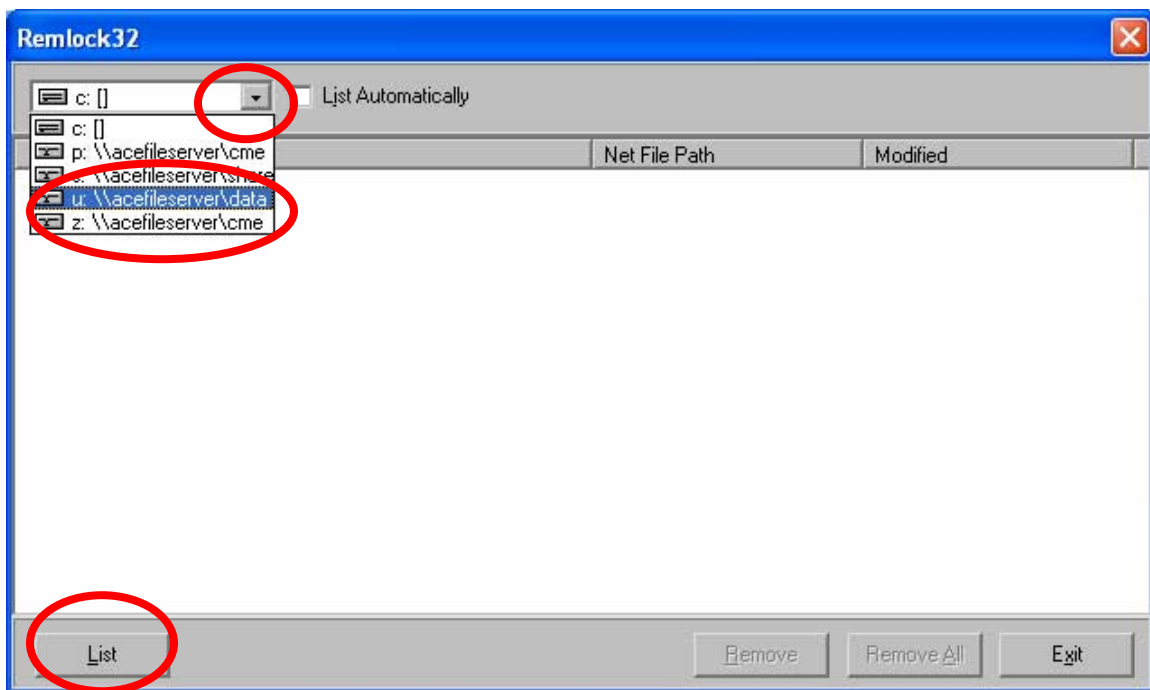


Fig. D

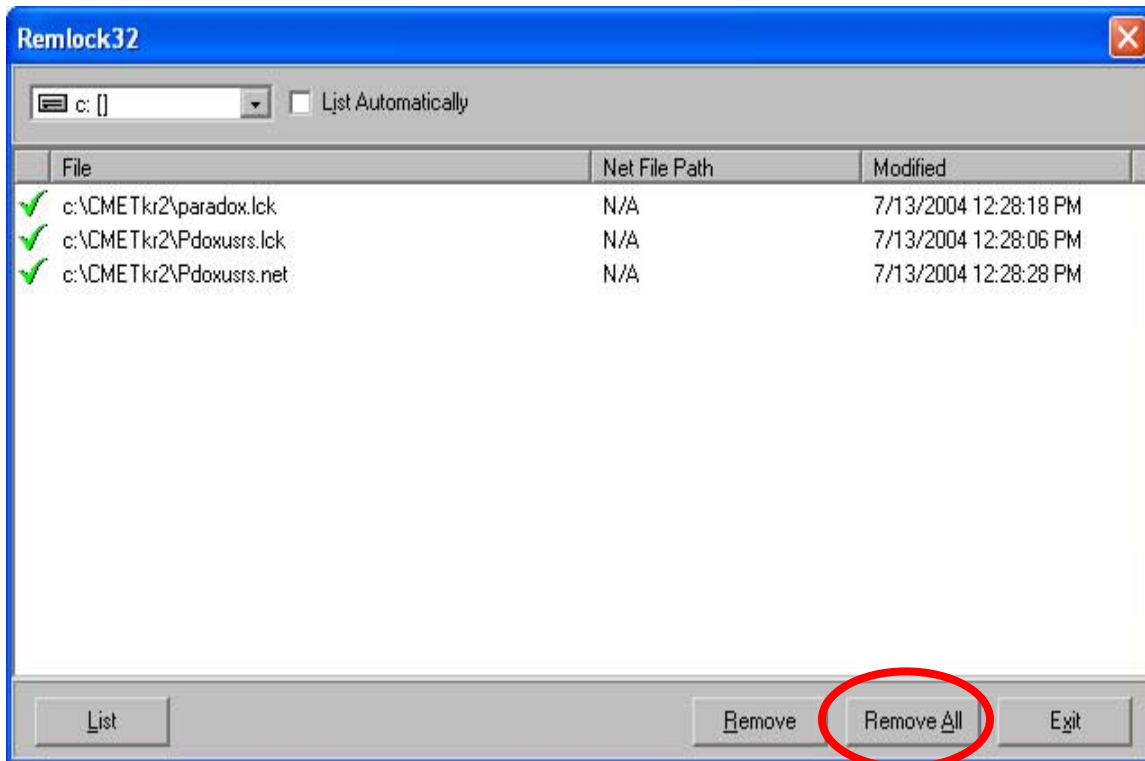
**Note:** Repeat Steps 4 and 5 for your CME Tracker Drive and your C drive.

**Step 4:** Click on the pulldown menu to choose the Drive for the CME Tracker path. Click on List. ([Fig. E](#))



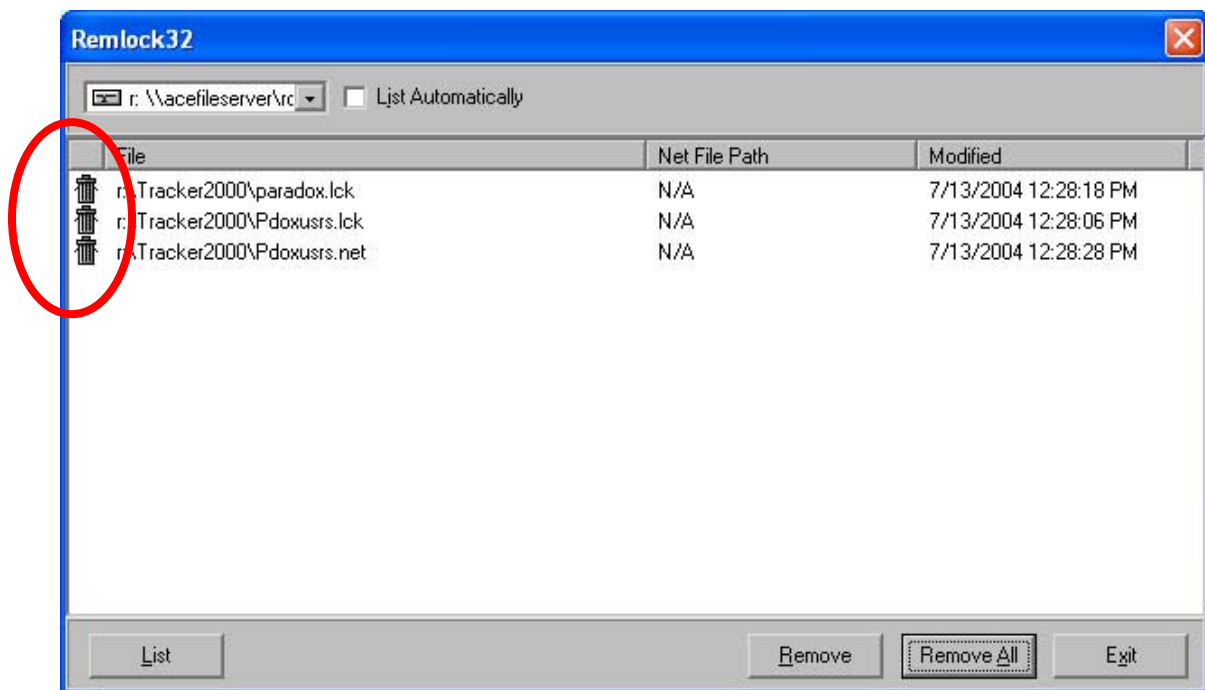
[Fig. E](#)

**Step 5:** After files are listed by the system, Click on Remove All. (Fig. F)



**Fig. F**

**Result:** The garbage can icon will now appear next to the files, showing that your locks have been removed. (Fig. F) You should now be able to successfully restart your CME Tracker.



(Fig. F)