

Tutorial

Objective: Configuring your CME WEB Tracker as a Trusted Site.

Step 1: Open your **CME Web Tracker** home page.

- a. Click **Tools**.
- b. Click **Internet Options**. (Fig. A)

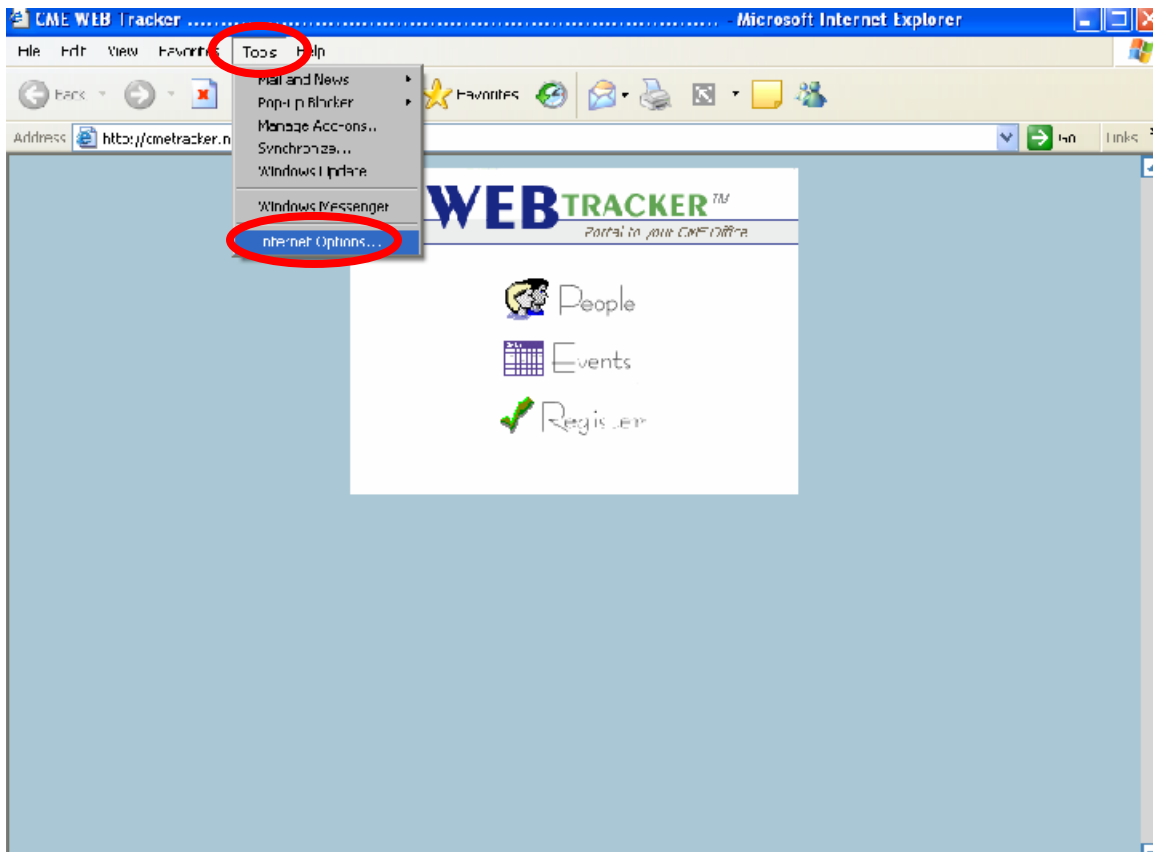


Fig. A

Tutorial

Step 2: The **Internet Options** popup appears.

- a. Click the **Security** tab.
- b. Click **Trusted sites**.
- c. Click **Sites**. (Fig. B)

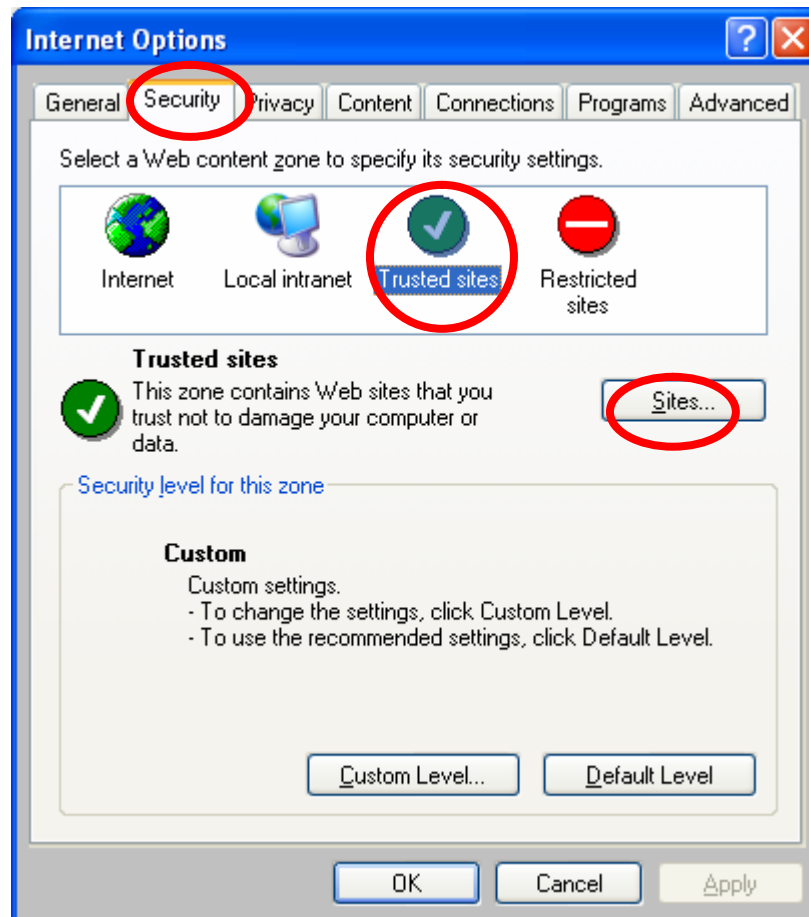


Fig. B

Tutorial

Step 3: The **Trusted sites** popup appears.

- a. Enter your **Web Tracker http:// address** in the “Add this Web site to the zone:” box.
- b. Click to uncheck the “**Require server verification**” box.
- c. Click **Add**. (Fig. C)

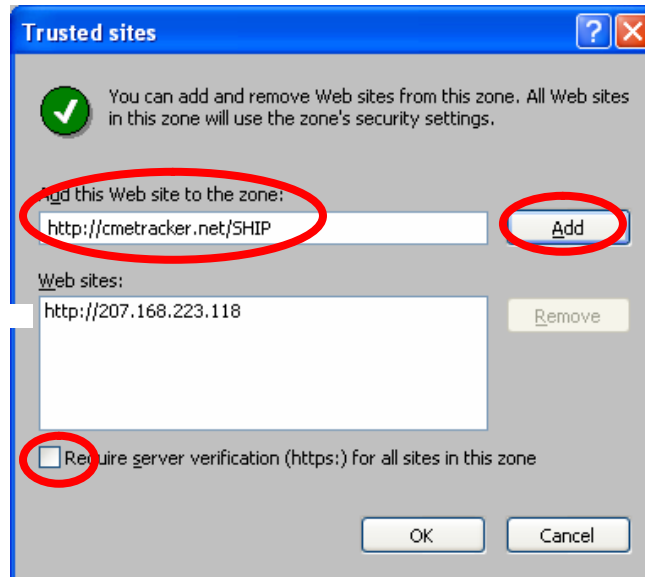


Fig. C

Step 4: Your **WEB Tracker** Web site now appears in the Web sites box.

- a. Click **OK**. (Fig. D)

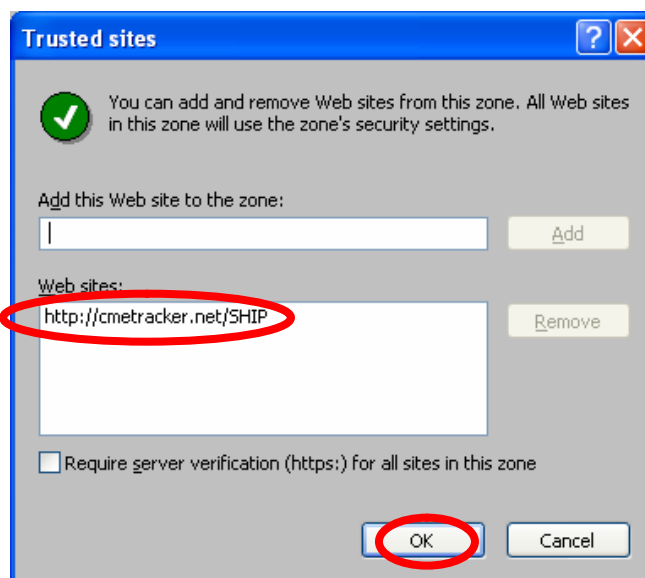


Fig. D

Tutorial

Result: Your **CME WEB Tracker** is now configured as a Trusted site. (Fig. E)

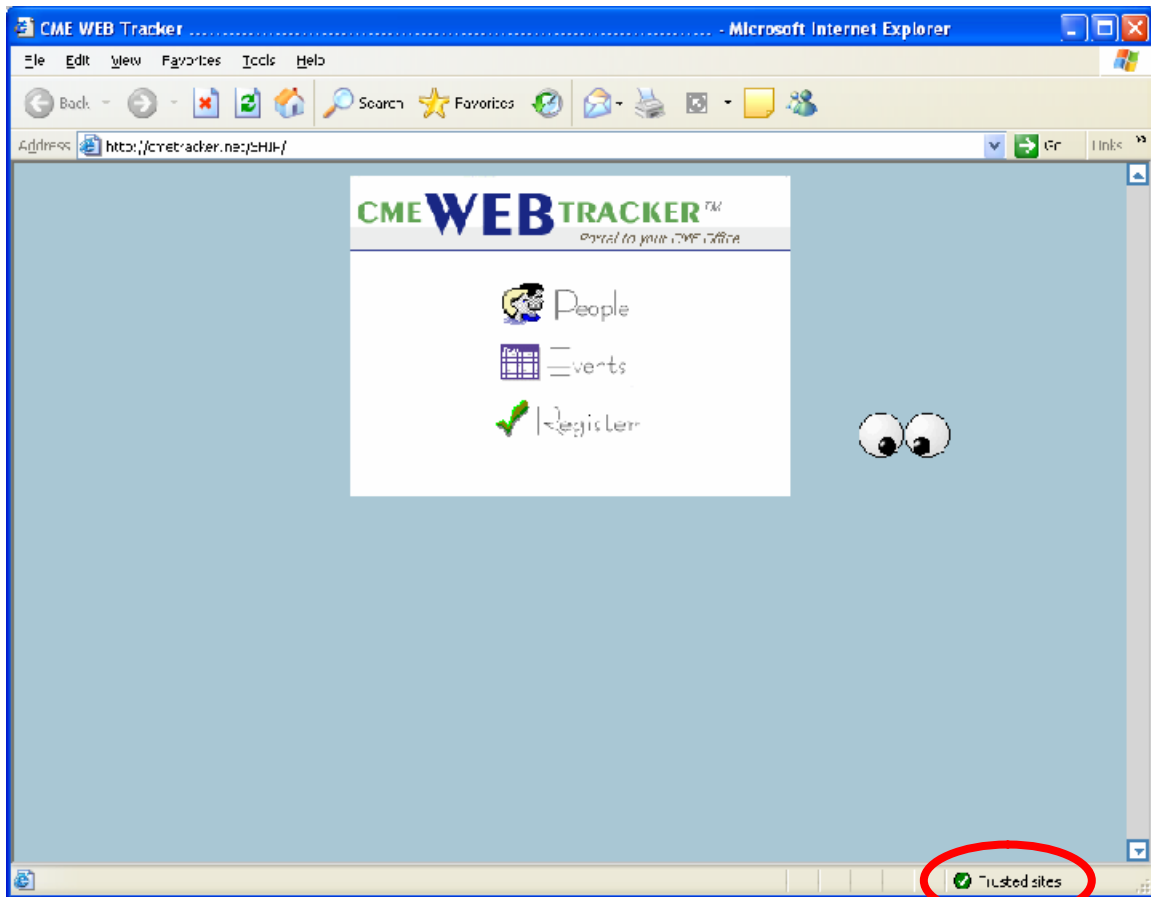


Fig. E